



# the Original **PaleoPanel**

**PaleoPanels** are manufactured in an assortment of accurate designs and sizes. Panels are made from reinforced concrete, and are available in a variety of colours including Black, Brown and Rustic. Optional metal stands are available for display in rock gardens or other architectural landscape installations.

For interior use, the same designs are available as lightweight panels made from durable polyurethane – suitable for hanging on walls or interior design installations.



**Tyranosaur Skull**  
Size: 46 x 37 inches



**Raptor Skull**  
Size: 15 x 11 inches



**Sabretooth Cat**  
Size: 60 x 30 inches



**Triceratops Skull**  
Size: 44 x 34 inches



**Albertosaurus Skull**  
Size: 17 x 14 inches



**Raptor Skeleton**  
Size: 52 x 29 inches



**Interlocking Trackway**  
Size: 24 x 20 inches (each panel)



**Pterosaur Skeleton**  
Size: 45 x 30 inches



**Death Pose Raptor**  
Size: 37 x 23 inches



**Fish Skeleton**  
Size: 12 x 9 inches



**Ammonite Shells**  
Size: 16 x 12 inches

What is a

# PaleoPanel?

**PaleoPanels** are museum quality panels for use as sidewalk stones or showpieces. Panels are made from concrete or light-weight polymers for interior or exterior use

Distributed by:

# the Original PaleoPanel

Designed & Manufactured by

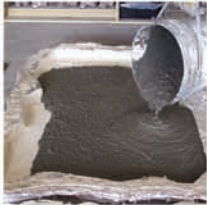


Accurate and realistic fossil panels for landscaping & architectural design use



### **Sculpting**

The master is sculpted with accuracy and care from fossil references to create an accurate reproduction of the real thing. Molds are then created for casting.



### **Pouring**

A composite of special cements are used that are strong, and of the ideal consistency to capture every detail from the mold.



### **Colouring and sealing**

The cast panels are hand-coloured to mimic the natural tones of real fossils. The concrete is sealed for durability.



### **Detail**

Three dimensional relief casting, colouring and preparations result in PaleoPanels that are stunning and unique.



**PALCOPREP Inc.**  
*Paleontology Collection & Preparation*

403.823.7727

email: [palcoprp@telus.net](mailto:palcoprp@telus.net)

[www.palcoprep.com](http://www.palcoprep.com)



**Now available in light-weight Urethane for indoor applications!**

403.823.7727

email: [palcoprp@telus.net](mailto:palcoprp@telus.net)